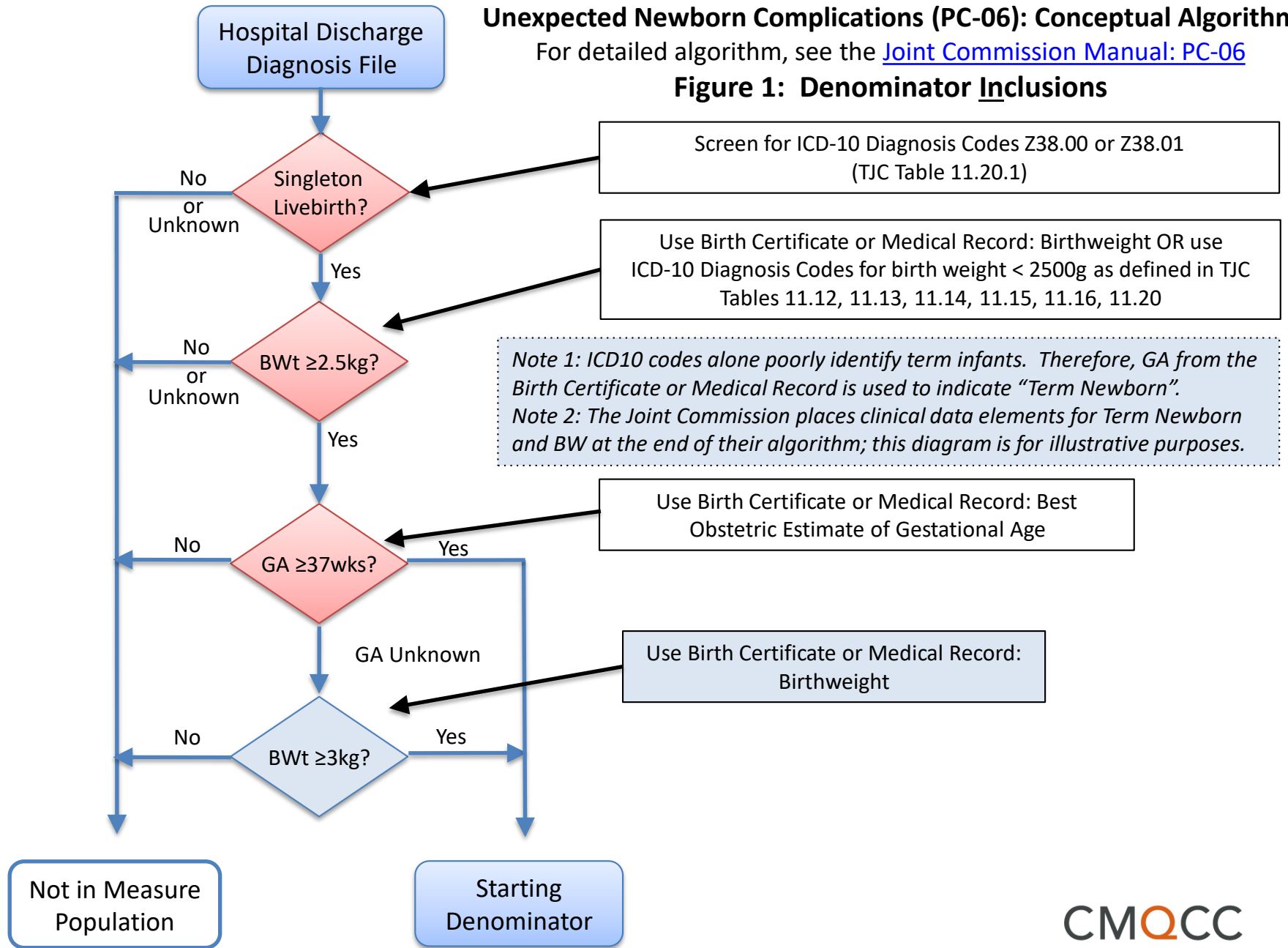


# Unexpected Newborn Complications (PC-06): Conceptual Algorithm

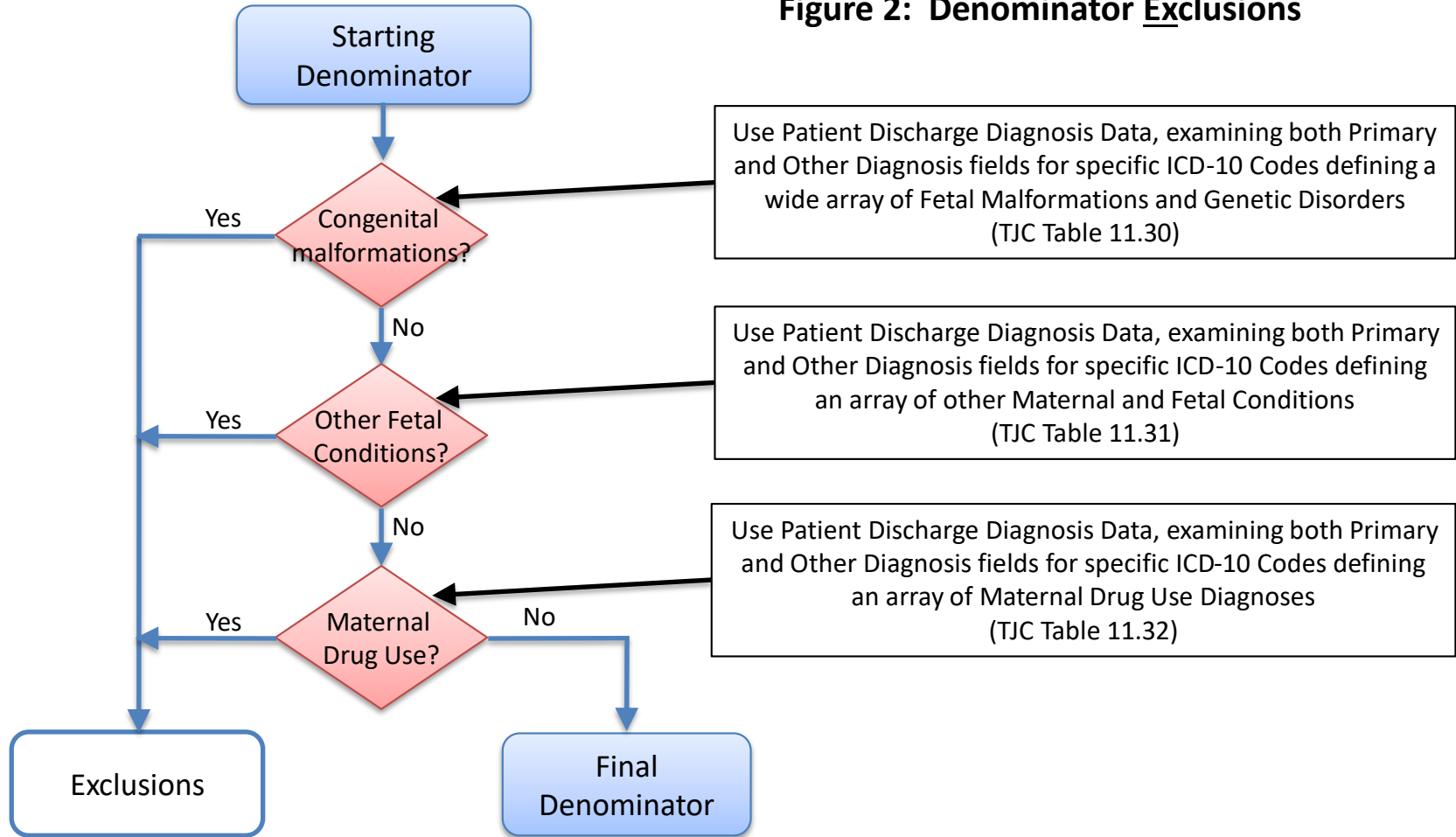
For detailed algorithm, see the [Joint Commission Manual: PC-06](#)

## Figure 1: Denominator Inclusions



# TJC PC-06: Unexpected Newborn Complications (aka Healthy Term Newborn)

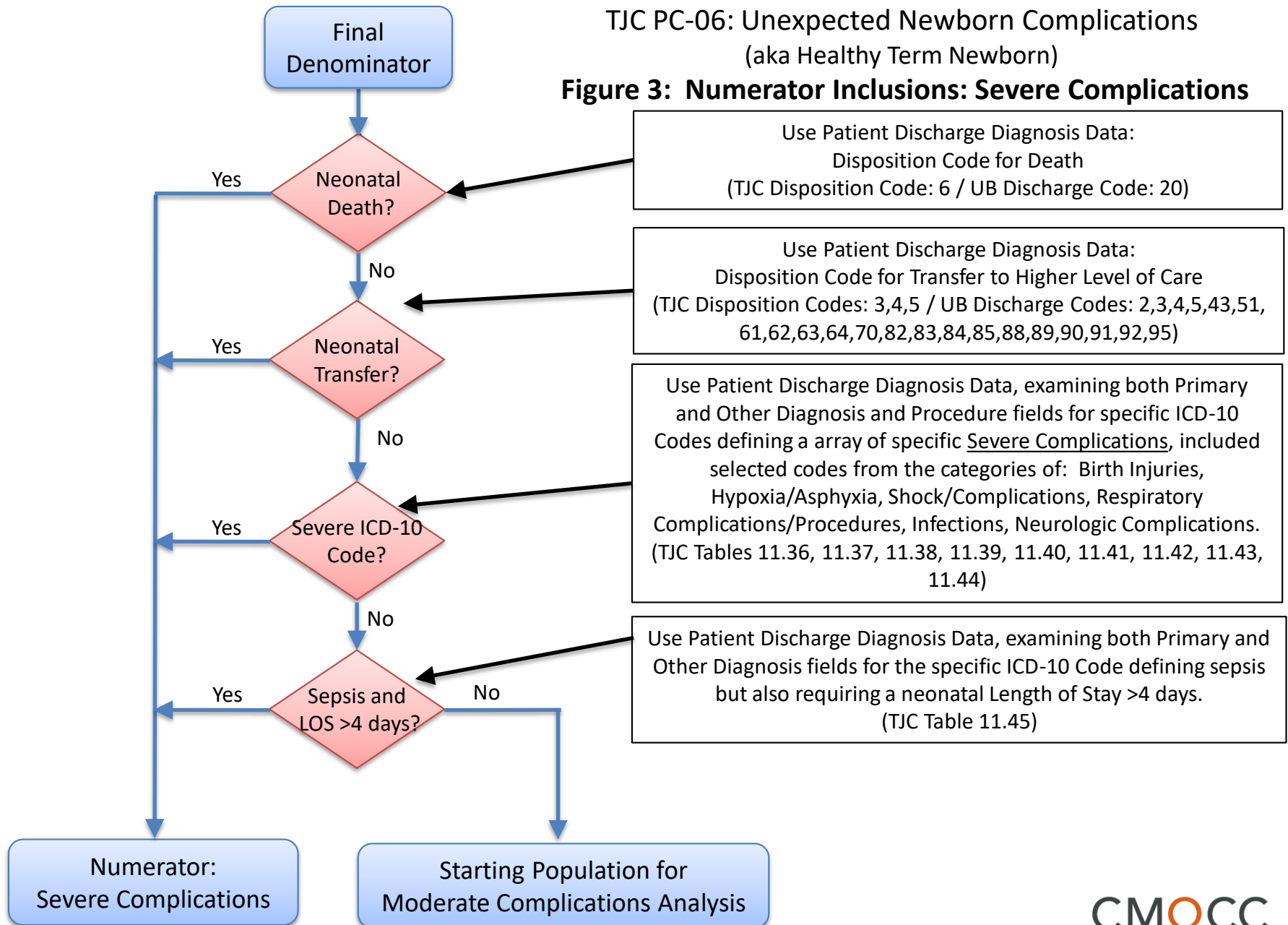
## Figure 2: Denominator Exclusions



In summary, the Final Denominator excludes most serious fetal conditions that are “preexisting” (present before labor), including: prematurity, multiple gestations, poor fetal growth, congenital malformations and genetic disorders, other specified fetal and maternal conditions and maternal drug use.

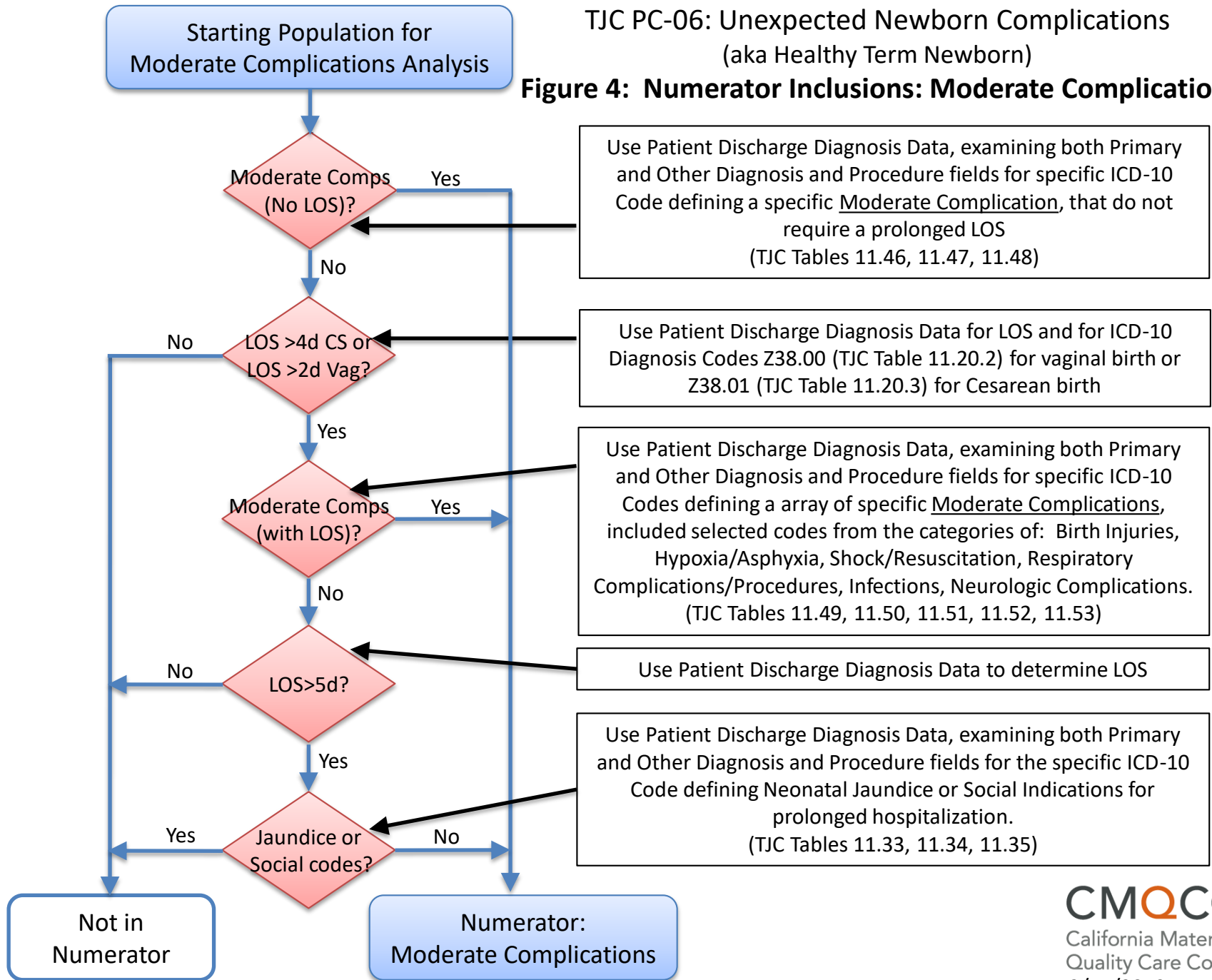
# TJC PC-06: Unexpected Newborn Complications (aka Healthy Term Newborn)

## Figure 3: Numerator Inclusions: Severe Complications



# TJC PC-06: Unexpected Newborn Complications (aka Healthy Term Newborn)

## Figure 4: Numerator Inclusions: Moderate Complications



# TJC PC-06: Unexpected Newborn Complications (aka Healthy Term Newborn, Revised Specifications)

## Table 1: Final Measure Calculations

- **Unexpected Newborn Complications (Total):** (rate per 1,000 livebirths)  
$$\frac{(\text{Severe Complications Numerator} + \text{Moderate Complications Numerator}) \times 1,000}{\text{Final Denominator}}$$

California state-wide rate in 2017: **31.7 per 1,000 births**
- **Unexpected Newborn Complications (Severe):** (rate per 1,000 livebirths)  
$$\frac{(\text{Severe Complications Numerator}) \times 1,000}{\text{Final Denominator}}$$

California state-wide rate in 2017: **19.0 per 1,000 births**
- **Unexpected Newborn Complications (Moderate):** (rate per 1,000 livebirths)  
$$\frac{(\text{Moderate Complications Numerator}) \times 1,000}{\text{Final Denominator}}$$

California state-wide rate in 2017: **12.8 per 1,000 births**