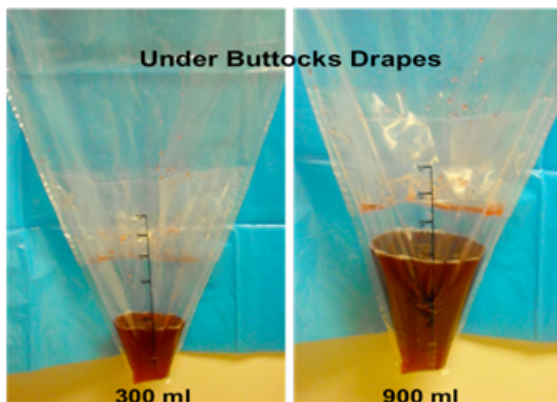


## APPENDIX F: TECHNIQUES FOR ONGOING QUANTITATIVE ASSESSMENT OF BLOOD LOSS

### Quantify blood loss by measuring

- Used graduated collection containers
- Account for other fluids (amniotic fluid, urine)
- At C/S hold irrigation until after blood loss



### Quantify blood loss by weighing

- Establish dry weights of common items
- Standardize use of pads
- Make scales available in rooms
- Build weighing of pads into routine practice
- Build electronic calculator into documentation



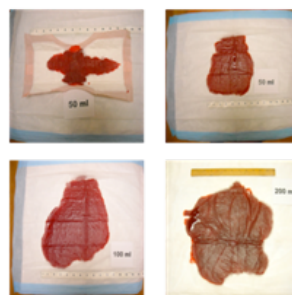
### If weights unavailable, then use formal estimation

- Record percent (%) saturation of blood soaked items with the use of visual cues such as pictures/posters to determine blood volume equivalence of saturated/blood soaked pads

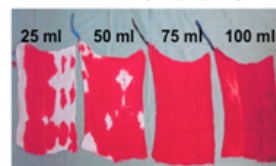
Photos courtesy of Beverly VanderWal and Jennifer McNulty and used with permission.

### Training Tools

Posters



18 X 18 inch Dry Lap Sponges



- 25 ml saturates about 50% area
- 50 ml saturates about 75% area
- 75 ml saturates entire surface
- 100 ml will saturate and 170